

# West Burton Solar Project

## Environmental Statement

### Figure 8.18.3: Landscape and Ecology Mitigation and Enhancement Measures West Burton 3 Revision B

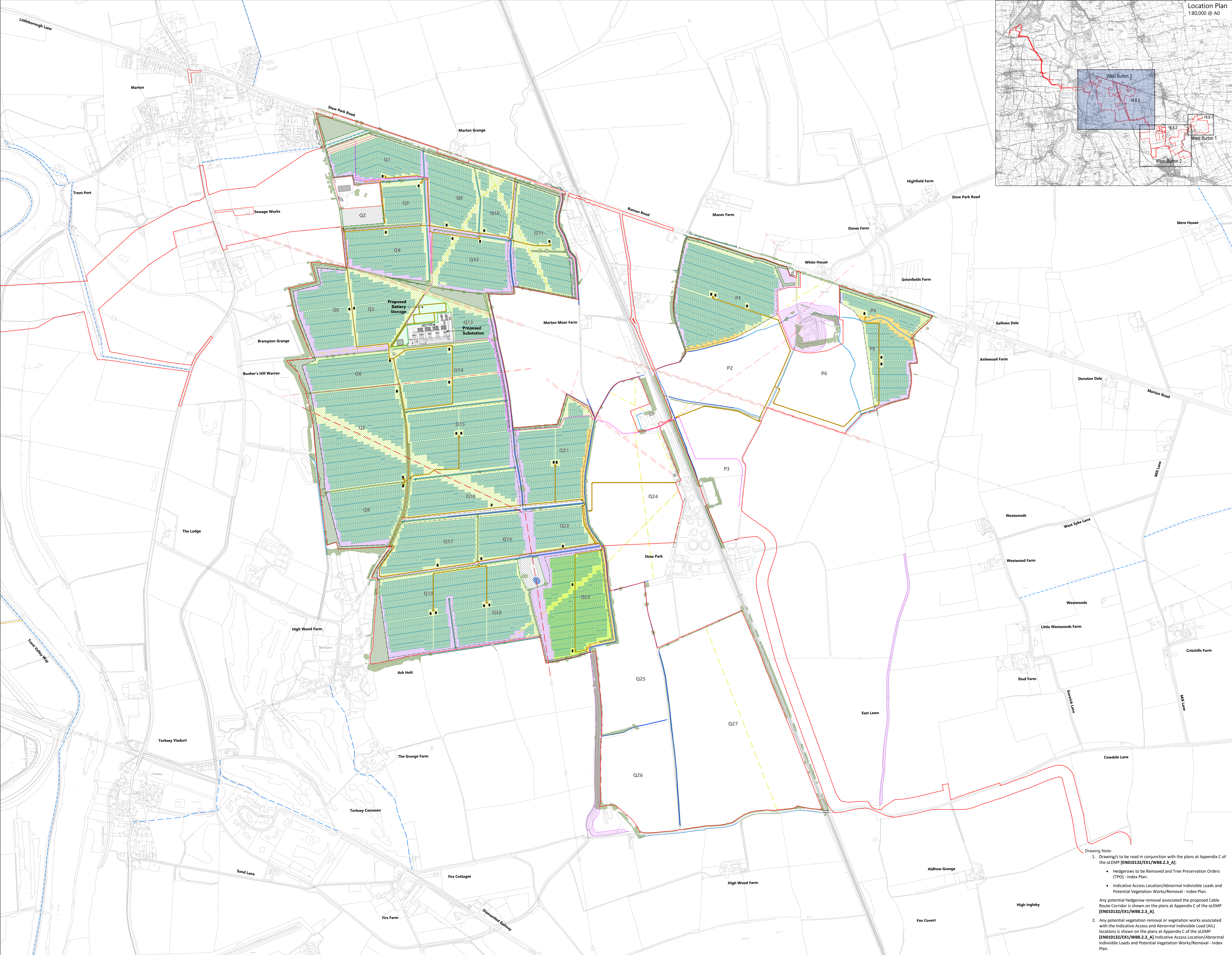
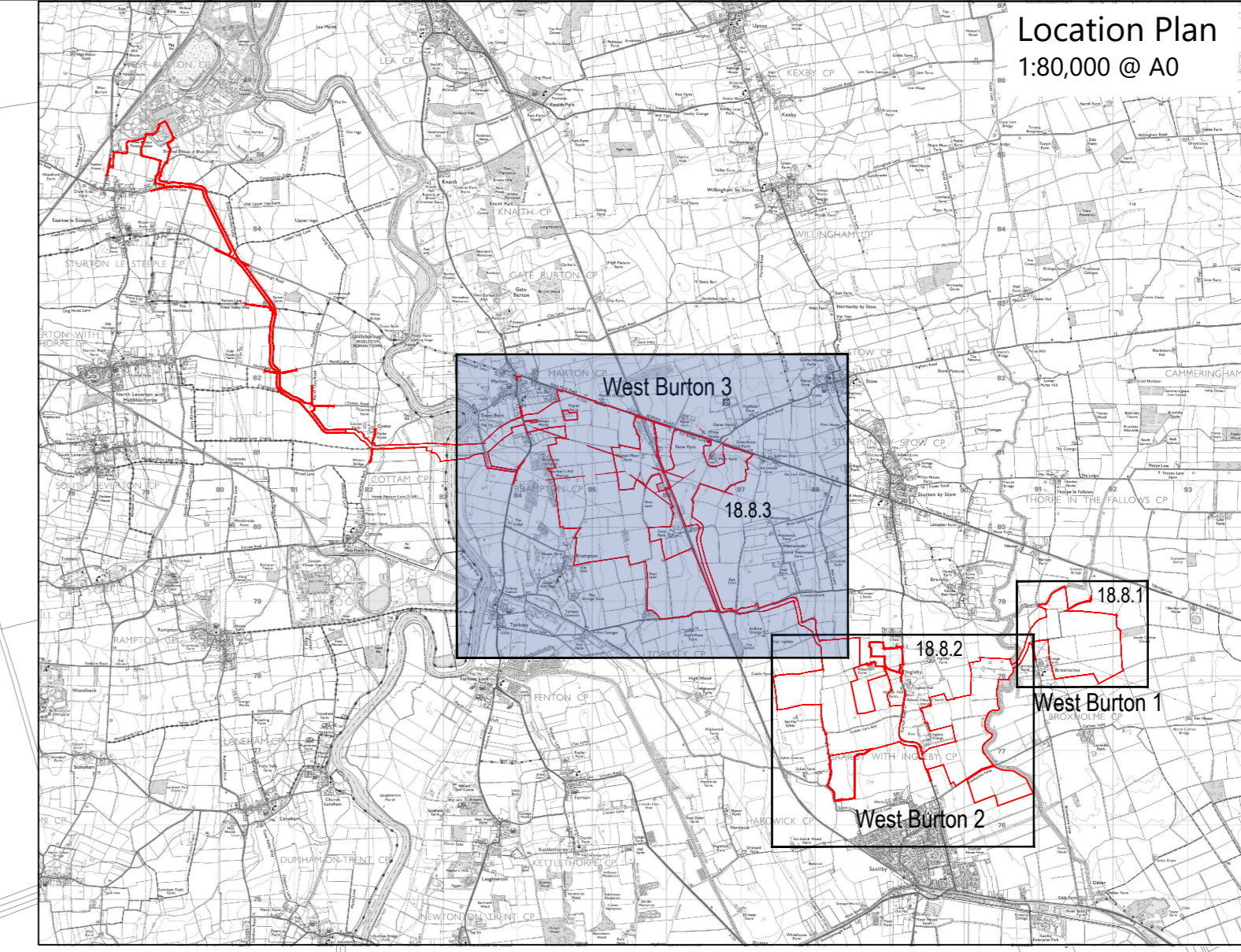
Prepared by: Island Green Power  
October 2024

PINS reference: EN010132  
Document reference: DEC/WB6.4.8.18.3\_B  
APFP Regulation 5(2)(a)



## Schedule of Changes

Figure Reference	Page	Description of Changes	Reason for Revision
WB6.4.8.18.3_B	3	Removal of solar panels, associated infrastructure and soft landscaping from Stow Park Deer Park (the following fields: part of P1, P2, P3, part of P4, part of P5, P6, Q24, Q25, Q26, Q27).	In response to Request for Information 1 from the Secretary of State.



- Key**
- Site Boundary
  - Soft Landscape**
    - Existing tree canopy
    - Existing hedge to be retained
    - Existing hedge to be removed permanently
    - Existing hedge reinforced with irregularly spaced native tree planting
    - Proposed native hedge with irregularly spaced hedgerow trees
    - Proposed native shelter belt / woodland planting
    - Proposed native scattered trees
    - Proposed diverse meadow mix (in reference to biodiversity opportunity mapping)
    - Proposed long term meadow creation
    - Proposed flower rich pollinator mix
    - Proposed tall herb mix
    - Proposed tussock mix
    - Proposed successional scrub
    - Proposed bird mitigation
    - Existing ditches (Not IDB)
    - Existing IDB ditch
    - Existing water body
    - Proposed Wildlife pond
  - Infrastructure**
    - Existing overhead power lines
    - Existing underground services
    - Proposed cable route
    - Proposed internal access tracks
    - Proposed solar panels
    - Proposed inverter
    - Proposed post and wire fencing
    - Proposed opaque fence (required for fixed tables only in accordance with the Glint and Glare chapter [EN010133/APP/WB6.2.16])
  - Landscape Designations and Constraints**
    - Public Right of Way
    - Scheduled Monument

Drawing Note:

1. Drawing/s to be read in conjunction with the plans at Appendix C of the oLEMP [EN010132/EX1/WB8.2.3\_A]:
  - Hedgerows to be Removed and Tree Preservation Orders (TPO) - Index Plan.
  - Indicative Access Location/Abnormal Invisibile Loads and Potential Vegetation Works/Removal - Index Plan.
2. Any potential vegetation removal or vegetation works associated with the Indicative Access and Abnormal Invisibile Load (AIL) locations is shown on the plans at Appendix C of the oLEMP [EN010132/EX1/WB8.2.3\_A].

Any potential hedgerow removal associated the proposed Cable Route Corridor is shown on the plans at Appendix C of the oLEMP [EN010132/EX1/WB8.2.3\_A].